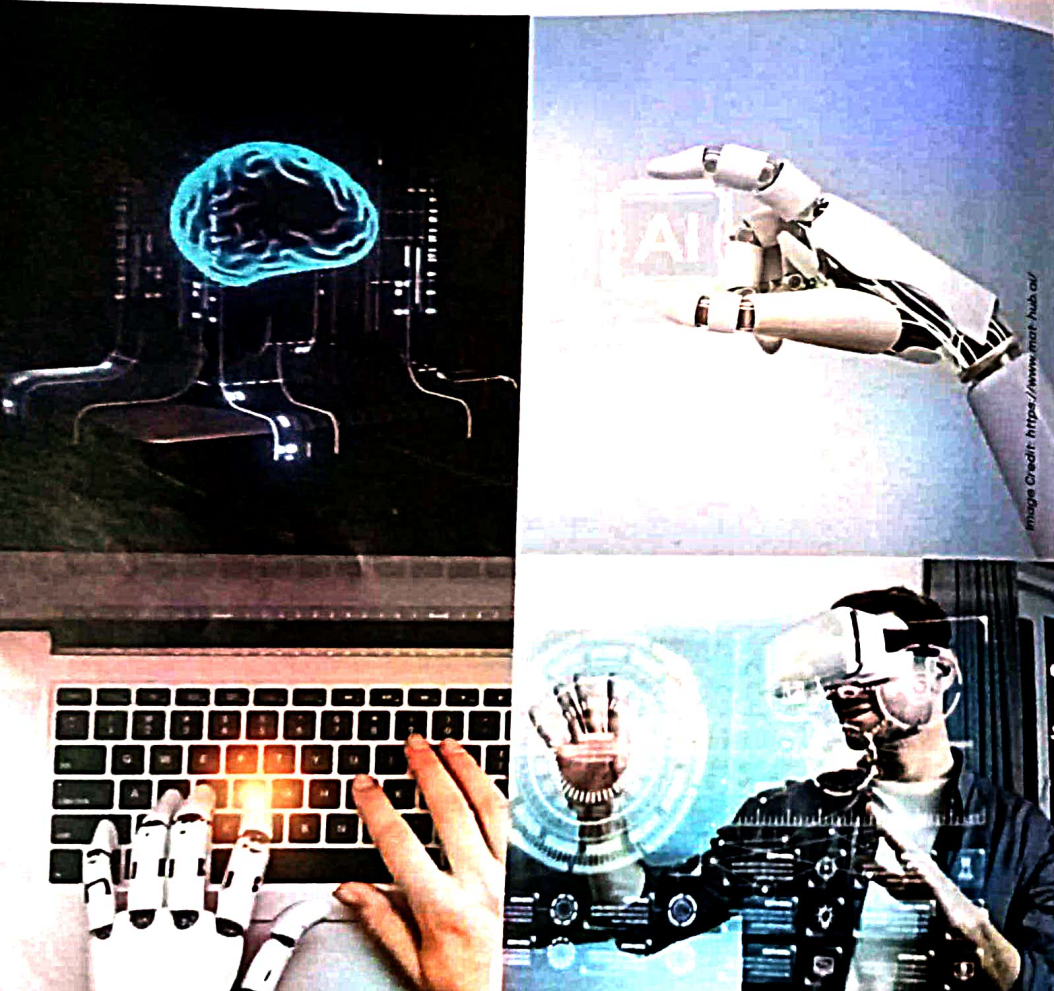


MATH

A centre of excellence
dedicated to AI & ML



THE Department of Science and Technology (DST), under the Ministry of S&T, and T-Hub, a Hyderabad-based start-up incubator, inaugurated the Centre of Excellence – Machine Learning and Artificial Intelligence Technology Hub (MATH) for boosting AI innovation and nurturing start-ups in India. This collaborative effort is a significant step towards harnessing the country's immense potential in the field of AI. This initiative represents a convergence of government support, technological infrastructure, and entrepreneurial spirit aimed at propelling India to the forefront of global AI innovation.

MATH aims to generate 500 jobs related to AI by the end of 2025 and support over 150 start-ups annually. It reveals a range of amenities comprising a mini data centre equipped with GPU capabilities, an advanced Learning Management System (LMS) designed specifically for AI education, and sturdy data infrastructure to support a wide range of AI applications. By providing a conducive environment for experimentation and collaboration, the centre aims to catalyse breakthrough innovations in AI that address pressing societal challenges and create new economic opportunities. One of the key objectives of the centre is to bridge the gap between academia and industry, facilitating knowledge exchange and collaborative research in AI.

India's emergence as a global leader in AI innovation and entrepreneurship hinges on its ability to create an enabling ecosystem that fosters creativity, collaboration, and risk-taking among start-ups. Recognising this, under the Government of India, the DST plays a crucial role in formulating policies, allocating funds, and providing strategic direction to promote scientific research and technological innovation across various sectors. T-Hub, on the other hand, is India's largest start-up ecosystem builder, located in Hyderabad. It catalyses innovation, providing start-ups access to mentors, investors, corporate partnerships, and global networks.

The collaboration between DST and T-Hub signifies a strategic partnership to leverage their respective strengths to create a thriving ecosystem for AI-driven start-ups.

The DST-T-Hub Centre of Excellence, MATH, offers a range of capacity-building programmes and initiatives designed to equip start-ups with the skills, knowledge, and resources they need to succeed in the competitive landscape of AI innovation. These programmes cover various aspects of start-up development, including business strategy, product development, marketing, fundraising, and intellectual property rights.