

PHOTOFEATURE

Jaws and Teeth — Unique and Powerful

Jaws and teeth are important for food digestion. Various species eat a variety of foods, from grass and fruits to meat, so they have distinct jaw and teeth adaptations for survival and feeding. Jaws and teeth are used for various activities, like grasping, tearing, etc. They also play a role in caring for young ones.

Studying fossilised jaws and teeth helps researchers with better insights into dietary habits, historical vegetation and varying climates.

Here are a few species with distinct jaws and teeth with unique shapes and biting forces.

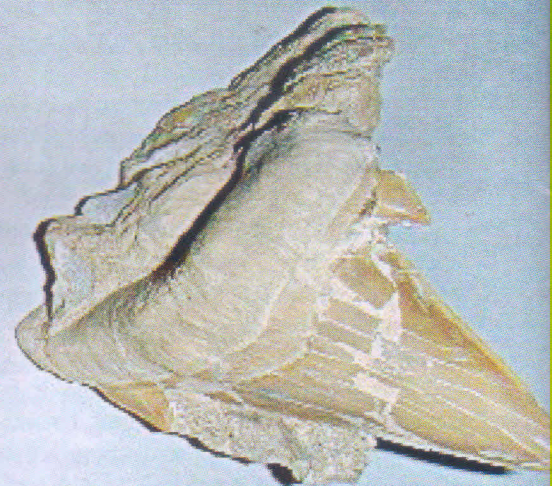


Crabeater seal (*Lobodon carcinophaga*)

These seals have a specially adapted sieve-like tooth which helps filter krill (small marine crustaceans). This is a unique adaptation for feeding. Their specially evolved lobed teeth facilitate them to filter krill from seawater.



Megalodon tooth compared with white shark tooth



Otodus Megalodon

Megalodon, which means “large tooth”, is an extinct species which is known for its massive and sharp teeth. The fossil remains of it are 15.9 to 2.6 million years old. Although we still don’t know the actual size of it but one could imagine by knowing that its single tooth is measured 7 inches in size, which is three times larger than modern sharks. Their teeth lock prey in their jaws, preventing their escape.

Image Credit: Wikimedia Commons