

THE TILT

Monalisa Paul

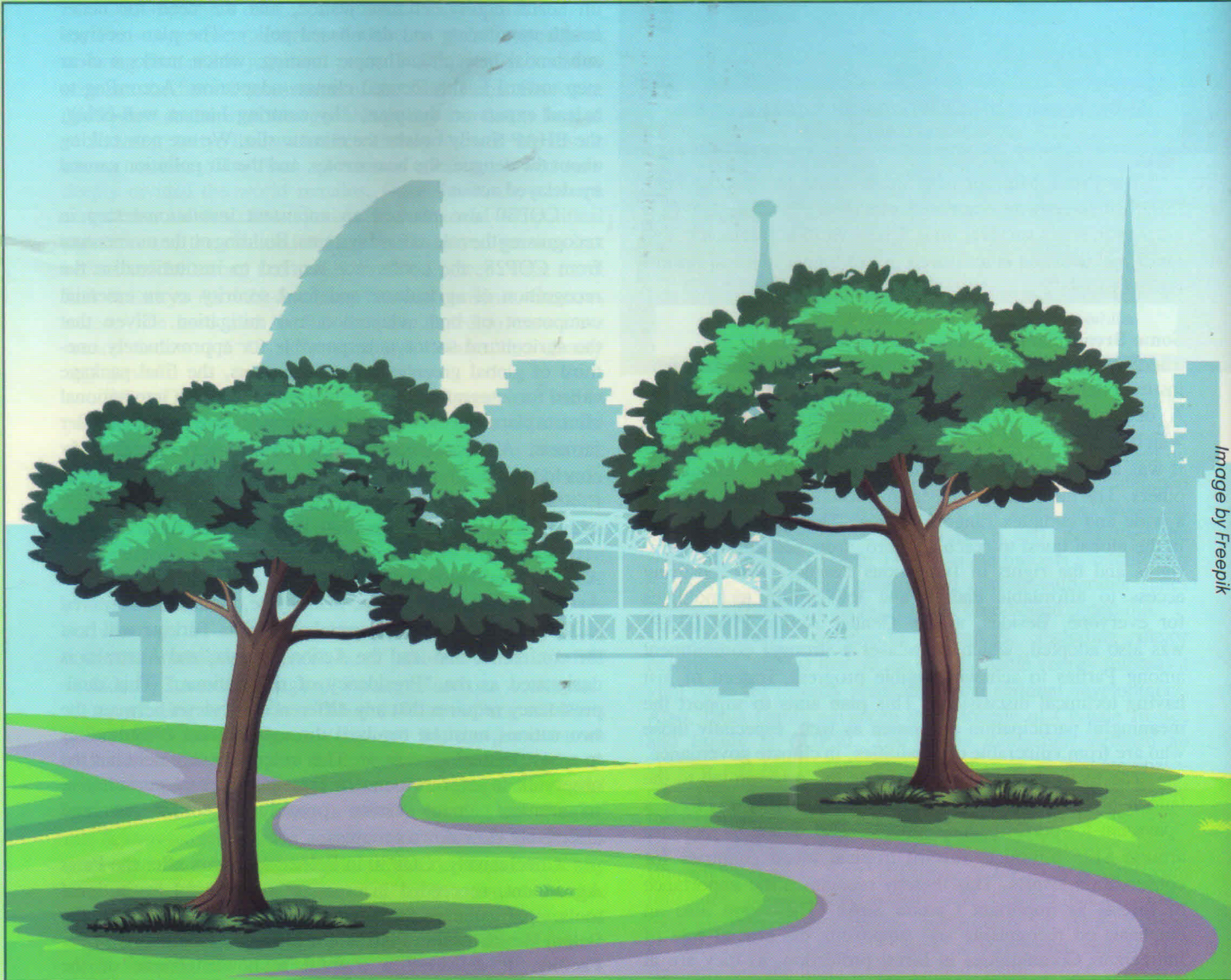


Image by Freepik

ASHOK was in the backyard of his lovely home. Since his wife passed away five years back and his only daughter settled in the United States, he has devoted much of his time towards organic farming. He has a scenic tree house as a home in the outskirts of Bikrampur. After a solid brick-walled boundary and different sections of fragrant rose trellis, there stand huge jackfruit trees over which the house is built. The jackfruit trees were natural to the surroundings when Ashok and his wife brought the plot

decades ago during his IAS service tenure. It was mutually decided by them not to chop off the trees but rather to build a tree house over them. The couple felt as if the trees were their dream house for the future. As she is no more, he built the picturesque tree house in her remembrance. Built over giant jackfruit trees, at 30 feet above the ground, the tree house could be accessed only through elevated walkways, strolling through his kitchen garden. The stay in it is highly luxurious as it has all the modern amenities like spacious bedrooms,