



# BRAINWARE UNIVERSITY

Term End Examination 2023-2024  
Programme – B.Optomtry-2022/B.Optomtry-2023  
Course Name – Ocular Anatomy  
Course Code - BOPTOC201  
( Semester II )

Full Marks : 60

Time : 2:30 Hours

[The figure in the margin indicates full marks. Candidates are required to give their answers in their own words as far as practicable.]

## Group-A

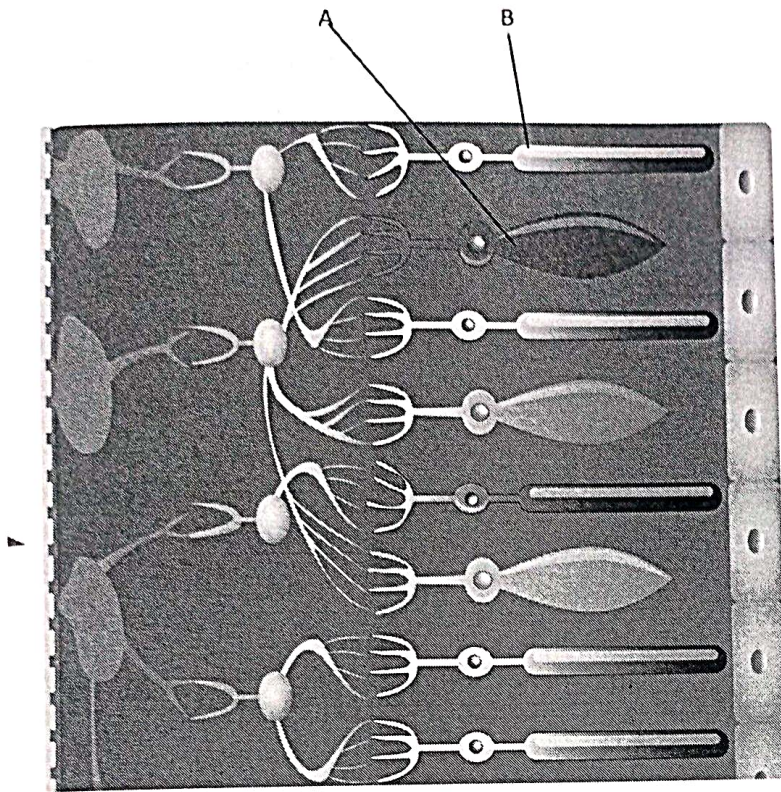
(Multiple Choice Type Question)

1 x 15=15

1. Choose the correct alternative from the following :

- (i) The radius of curvature of the posterior surface of cornea is .....
- |           |           |
|-----------|-----------|
| a) 6.5 mm | b) 7.5 mm |
| c) 6.8 mm | d) 7.8 mm |
- (ii) Corneal epithelium is composed of .....
- |   |   |
|---|---|
| a) Stratified squamous keratinised epithelial cells | b) Stratified squamous non-keratinised epithelial cells |
| c) Avascular layer of collagen fibres               | d) Vascular layer of connective tissue                  |
- (iii) Select the type of collagen makes up the majority of the stroma of the cornea
- |                      |                     |
|----------------------|---------------------|
| a) Type I collagen   | b) Type II collagen |
| c) Type III collagen | d) Type IV collagen |
- (iv) Orbicularis oculi muscle is supplied by .....
- |                 |                     |
|-----------------|---------------------|
| a) Facial nerve | b) Oculomotor nerve |
| c) Optic nerve  | d) Trigeminal nerve |
- (v) LPS is supplied by .....
- |                      |                     |
|----------------------|---------------------|
| a) Sympathetic nerve | b) Oculomotor nerve |
| c) Optic nerve       | d) Trigeminal nerve |
- (vi) Inferior oblique muscle is supplied by .....
- |                    |                     |
|--------------------|---------------------|
| a) Trochlear nerve | b) Oculomotor nerve |
| c) Optic nerve     | d) Abducens nerve   |
- (vii) Superior oblique muscles is supplied by .....
- |                    |                     |
|--------------------|---------------------|
| a) Trochlear nerve | b) Oculomotor nerve |
| c) Optic nerve     | d) Abducens nerve   |





4. Describe the blood supply of lacrimal passages. (3)

5. Explain the surgical spaces of the orbit. (3)

6. Draw and label the anterior chamber angle structures. (3)

OR

Explain the clinical perspective of keratoconus. (3)

**Group-C**

(Long Answer Type Questions)

5 x 6=30

7. Illustrate the microscopic structure of the iris. (5)

8. "Medial wall of orbit is vulnerable to mechanical trauma." Justify. (5)

9. Define the components of visual pathway along with a suitable diagram. (5)

10. Discuss the origin, and insertion of the medial rectus muscle and mention its nerve supply. (5)

11. Explain the layers of the conjunctiva with a diagram. (5)

12. A patient is complaining of limited elevation, on examination you have suspected superior rectus palsy. Describe the origin, and insertion of the muscle and write down your logic behind the susception. (5)

**OR**

Discuss the origin, and insertion of the Inferior rectus muscle and mention its nerve supply. (5)

\*\*\*\*\*